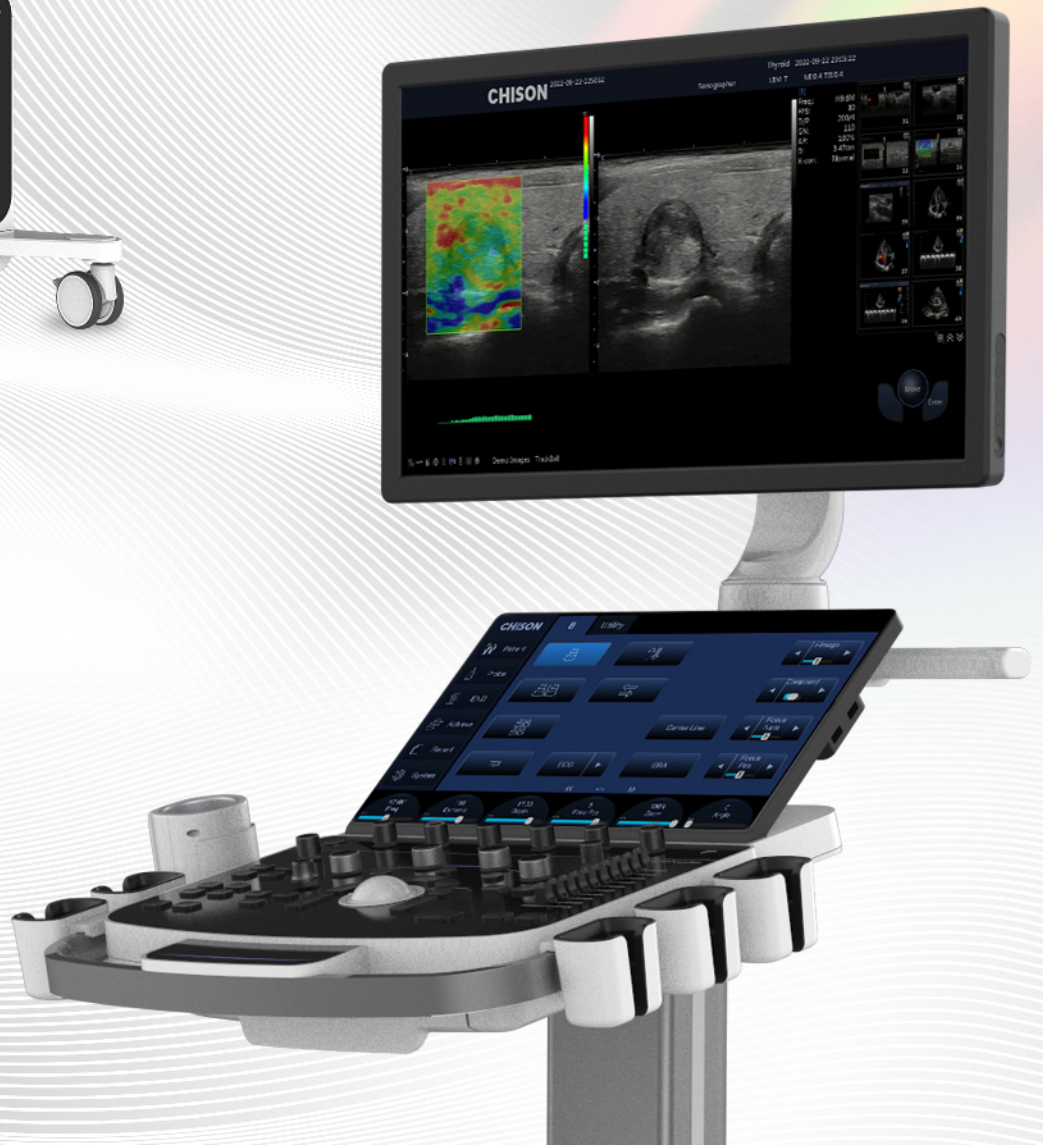


**CHISON**  
Value Beyond Imaging

# SonoMax

Premium Imaging for Exceptional Healthcare







**CHISON SonoMax** a top-of-the-line cart-based ultrasound system that embodies a perfect blend of style and functionality. Designed with an unwavering attention to detail, its sleek and ergonomic design offers both comfort and exceptional performance. SonoMax delivers the accuracy and versatility medical professionals need to provide the best possible patient care. With its advanced features and intuitive interface, CHISON SonoMax sets a new standard for premium ultrasound systems.

### **MAX** Clarity

FHI+ employs advanced digital signal processing algorithms to significantly improve both resolution and penetration.

### **MAX** Precision

Fine-tune transmit waveforms for multi-frequency energy distribution and precise receive frequency control for image uniformity and contrast resolution.

### **MAX** Performance

Coherence beamforming technology improves SNR via digital signal processing, optimizing signal path, reducing noise, and enhancing signal.



**MAX ++**  
**PLATFORM**

# PREMIUM DESIGN



23.8" large size HD LED screen for higher clarity



15.6" Angle adjustable touch screen

12° tilt keyboard for extreme comfort



Bigger trackball make control with ease



Pinless Port  
5 Transducer Connectors with Stylish Lights



Flexible height adjustment with 25CM lifting range



*Ease of transportation*



*Innovative service solution*



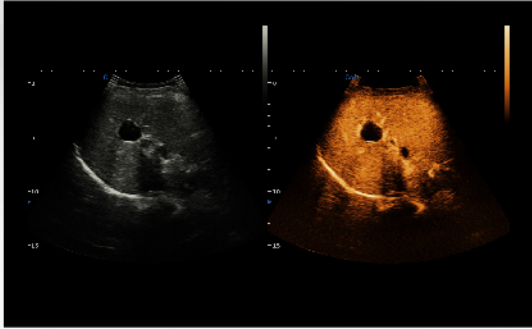


# GENERAL



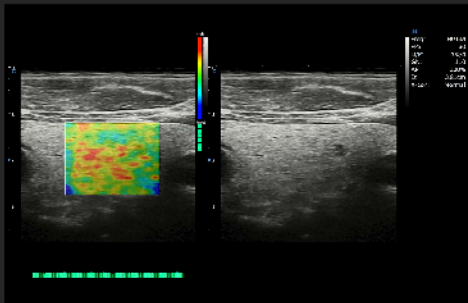
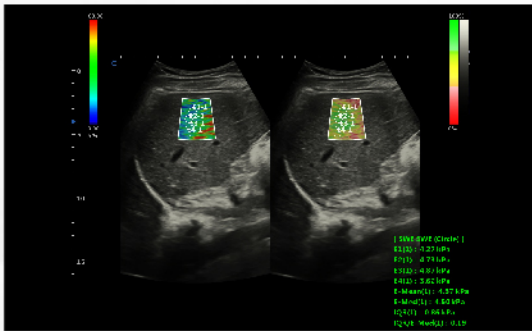
## SonoContrast

- Developed to visualize the micro-circulation in tissue, that is, the blood flow in imperceptible blood vessels.
- Potentially be used to improve diagnosis and therapy in several clinical situations.
- More sensitive, better performance.



## Shear Wave Elastography

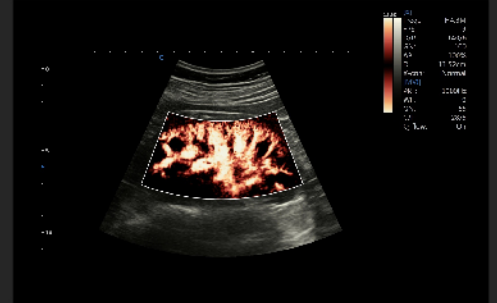
- P-SWE point shear wave imaging, high precision singlepoint measurement, higher penetration.
- 2D-SWE surface shear wave imaging, real-time two-dimensional measurement to obtain more diagnostic information.
- The system can provide variety of quantitative analysis parameters, such as velocity values, Young's modulus and so on.



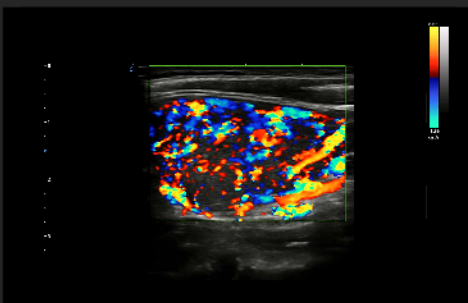
Thyroid, Elastography



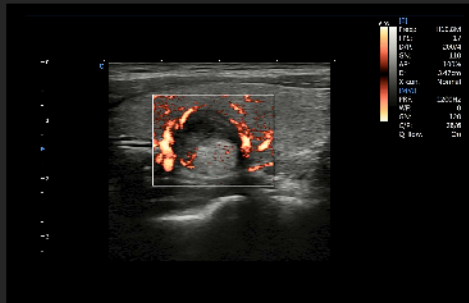
Pleural and Abdominal Effusion



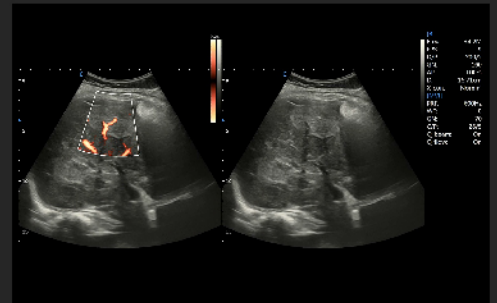
Kidney, MVI



Hyperthyroidism, C Mode



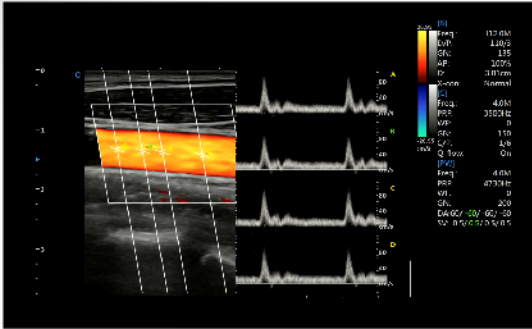
Thyroid Nodule, MVI



Liver, MVI

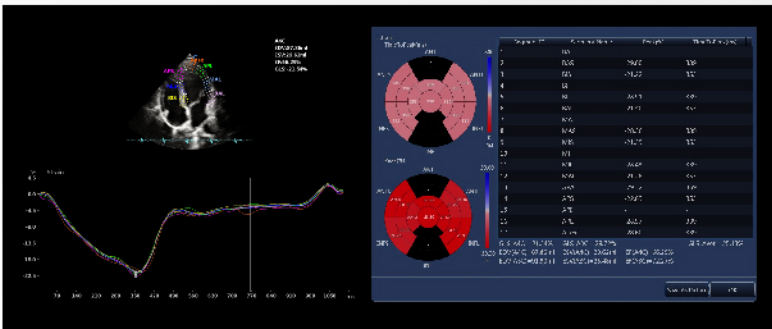


# CARDIOVASCULAR



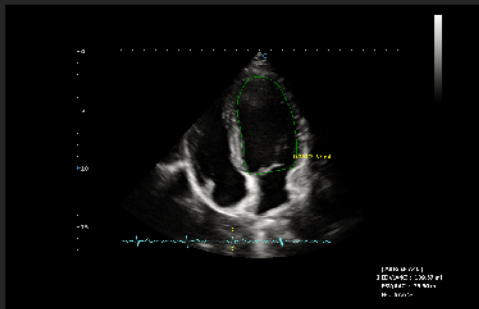
## SonoPW

- The sample gate can be extended to 4 during PW mode.
- It can switch and active each sample gate to realize multi-point spectrum measurement in the same cardiac cycle at the same scanning plane ; Support synchronous display of spectrum and speed value.

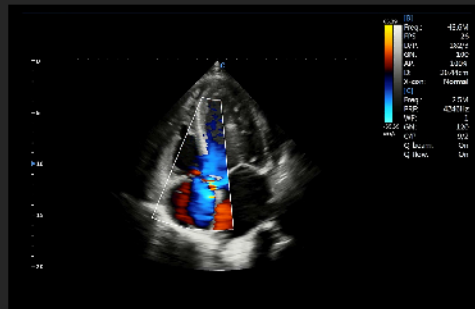


## Strain and Strain Rate

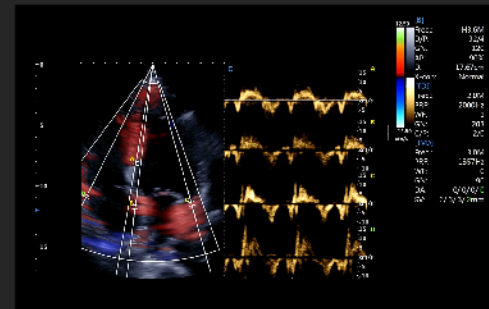
- A new non-invasive method for assessment of myocardial function.
- Ability to differentiate between active and passive movement of myocardial segments, to quantify intraventricular dyssynchrony.
- To evaluate components of myocardial function.



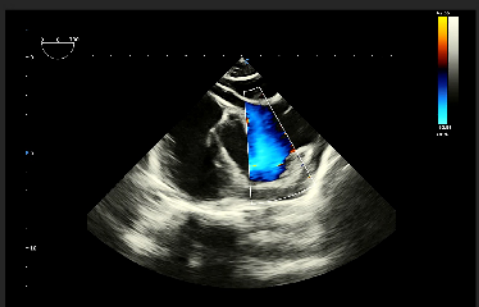
A4C, Auto EF



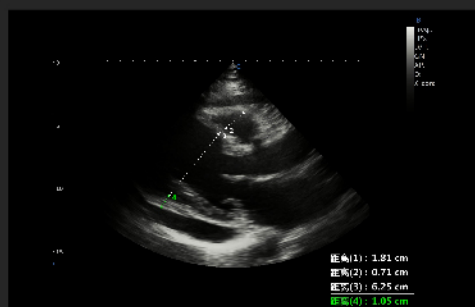
Four Chambers View, C Mode



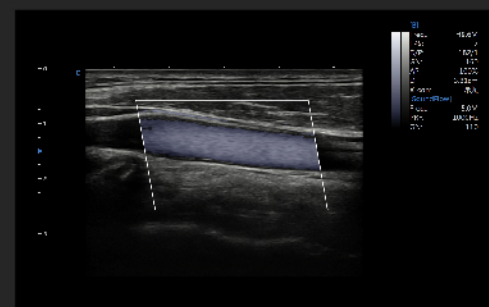
TDI-SonoPW



TEE



Pericardial Effusion

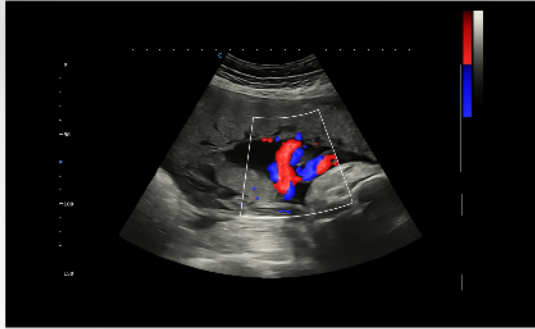


SoundFlow





# WOMEN'S HEALTHCARE

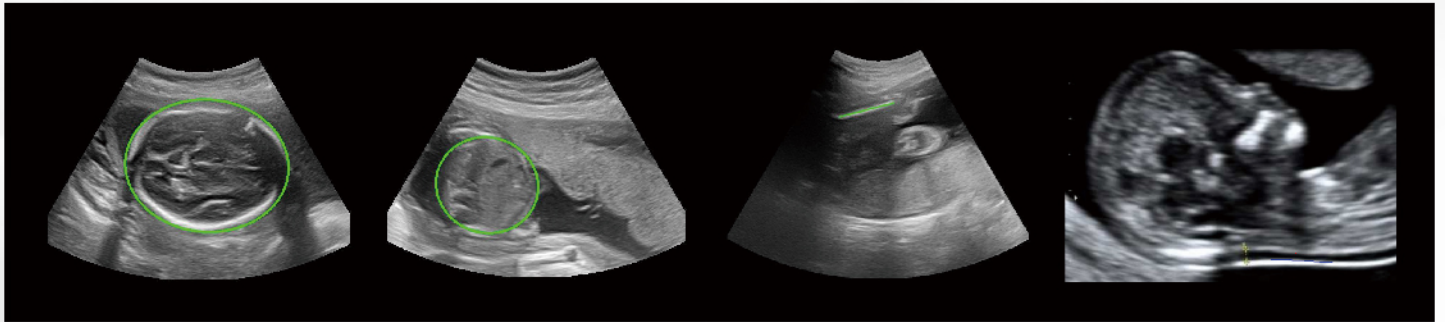


## Volume Flow

- A three-dimensional technology which can provide the real-time visualization of hemodynamics blood flow with a density appearance.

## Sono - OB

- Automatically measure: BPD, HC, AC, FL, NT.
- Efficiency and accuracy.



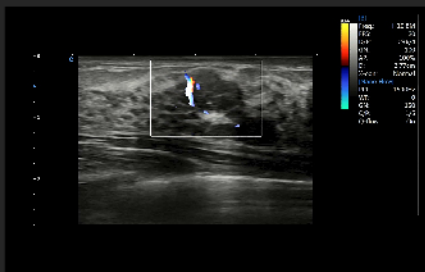
Fetal Face, Virtual HD



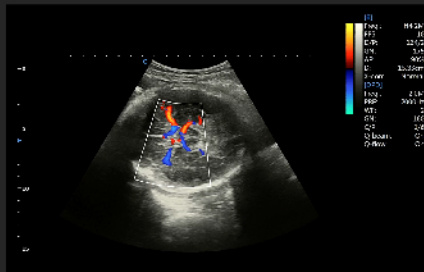
Fetus Abdomen, B Mode



Fetus, B Mode



Breast Nodule, NanoFlow



MCA, C Mode



Uterus , 210°

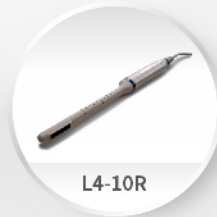


# PREMIUM VERSATILITY

## Convex probe:



## Linear probe:



## Trans-vaginal Probe:



## Phased array probe:



## Volume probe:



## Micro convex probe:



## Bi-plane probe:



# SonoFamily

*Rethink, Redefine, Rebuild and Reeducate the Future of the Ultrasound*



**SonoEye**



• **SonoMax** •



**SonoAir**

CHISON Medical Technologies Co., Ltd.

**Sales & Service Contact Address:** No.3, Changjiang South Road, Xinwu District, Wuxi, Jiangsu, China 214028

**TEL :** 0086-510-85310937 **FAX :** 0086-510-85310726 **EMAIL :** export@chison.com.cn

We reserve the right to make changes to this catalogue without prior notice. All rights reserved.  
Please contact our local dealer for the latest information.